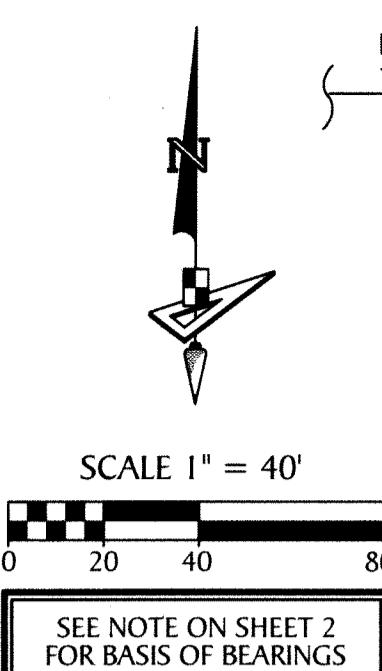


GROVES OF WESTLAKE - PHASE II

A SUBDIVISION IN SECTION 7, TOWNSHIP 43 SOUTH, RANGE 41 EAST, CITY OF WESTLAKE, PALM BEACH COUNTY, FLORIDA, BEING A REPLAT OF TRACT "O", GROVES OF WESTLAKE - PHASE I, PLAT BOOK 130, PAGES 120 THROUGH 135, INCLUSIVE, PUBLIC RECORDS OF PALM BEACH COUNTY, FLORIDA.

BASIS OF BEARINGS
NORTH BOUNDARY OF SECTION 6, TOWNSHIP 43 S., RANGE 41 E.
S.89°48'53"E., 5270.23' (MEASURED)
S.89°48'52"E., 5270.39' (COUNTY)

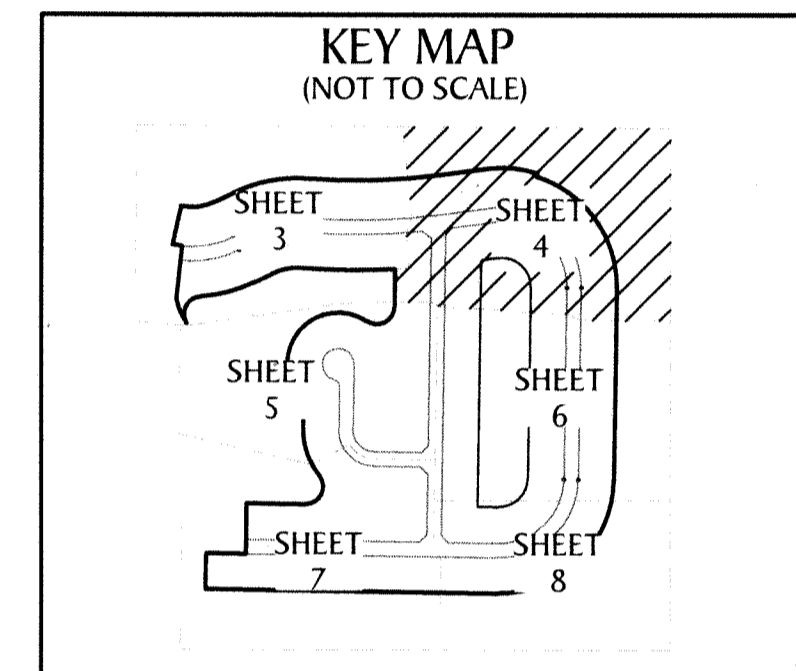
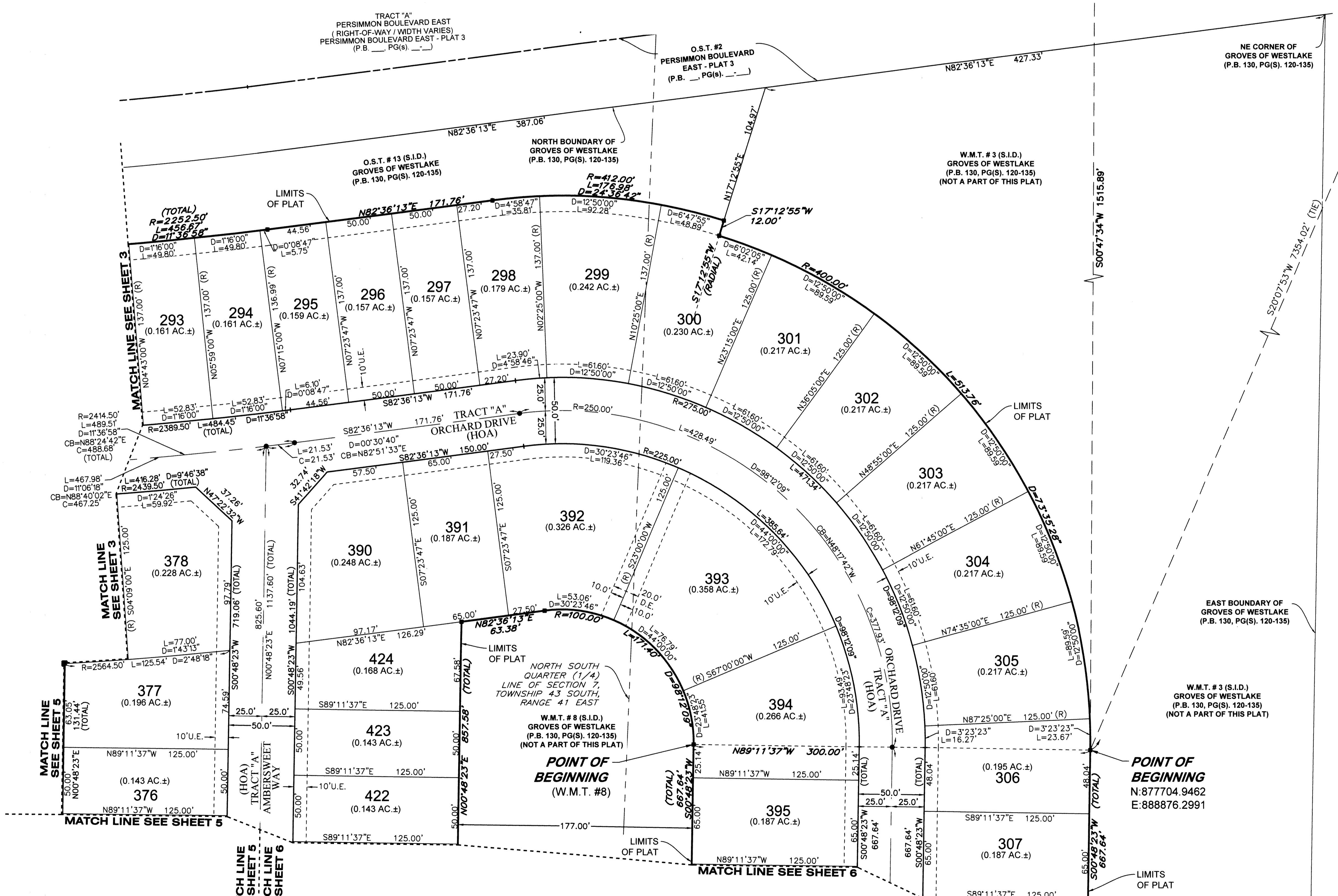
NORTH BOUNDARY OF SECTION 6, TOWNSHIP 43 S., RANGE 41 E.



POINT OF COMMENCEMENT
NORTHWEST CORNER OF SECTION 6, TOWNSHIP 43 S., RANGE 41 E.
SET 3.5" IRON PIPE "PUBLIC LAND SURVEY CORNER-TALLAHASSEE MERIDIAN" BRASS DISK "10' EAST" SET IN CONCRETE FOUND 10' EAST ON SECTION LINE
N: 884626.7147 / E: 886137.1629
NAD83 (2007 ADJUSTMENT)
CERTIFIED CORNER RECORD #107597

NORTH BOUNDARY OF SECTION 6, TOWNSHIP 43 S., RANGE 41 E.
NORTHEAST CORNER OF SECTION 6-43-41
FOUND BRASS DISK IN CONCRETE "P.B.C."
N: 884809.6818 E: 881407.3638
NAD83 (2007 ADJUSTMENT)
CERTIFIED CORNER RECORD #107591
EAST LINE OF SECTION 6-43-41
SOUTHEAST CORNER OF SECTION 6-43-41
NORTHEAST CORNER OF SECTION 7-43-41

42



- LEGEND**
- P.O.B. --- POINT OF BEGINNING
 - P.O.C. --- POINT OF COMMENCEMENT
 - P.B. --- PLAT BOOK
 - D.B. --- DEED BOOK
 - PG./PG(S) --- PAGE(S)
 - NAD --- NORTH AMERICAN DATUM
 - W.M.T. --- WATER MANAGEMENT TRACT
 - O.S.T. --- OPEN SPACE TRACT
 - P.B.C. --- PALM BEACH COUNTY
 - U.E. --- UTILITY EASEMENT
 - D.E. --- DRAINAGE EASEMENT
 - L.M.A.E. --- LAKE MAINTENANCE ACCESS EASEMENT
 - 7-43-41 --- SECTION-TOWNSHIP-RANGE
 - R --- RADIUS
 - L --- ARC LENGTH
 - D --- DELTA ANGLE
 - CB --- CHORD BEARING
 - C --- CHORD
 - R/W --- RIGHT-OF-WAY
 - (R) --- RADIAL
 - (NR) --- NON-RADIAL
 - HOA --- HOMEOWNERS ASSOCIATION
 - S.I.D. --- SEMINOLE IMPROVEMENT DISTRICT
 - PRM --- PERMANENT REFERENCE MONUMENT
 - --- PERMANENT CONTROL POINT
 - --- FOUND PERMANENT REFERENCE MONUMENT
 - --- SET 4"x4" CONCRETE MONUMENT WITH 2" ALUMINUM DISK STAMPED "PRM LB 7768"

